

Protecting Trees During Construction

Fact Sheet No. 7.420

Gardening Series | Trees and Shrubs

by C. Dennis and W.R. Jacob*

Why Preserve Existing Trees?

Shade trees add to the value of residential and commercial properties. During construction, established, healthy trees can be preserved with minimal effort or expense. Many trees are valuable enough to justify the extra concern.

The Preservation Planning Process

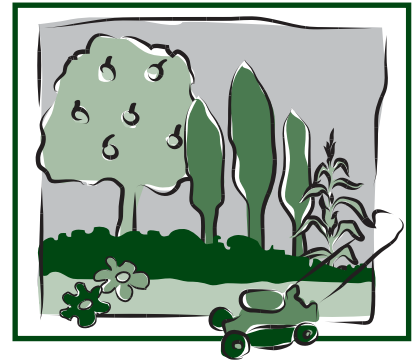
Many towns and cities in Colorado have tree protection specifications detailed in their land use code; property owners must adhere to the tree protection specifications spelled out in land use code of their town or city. Prior to beginning a construction project, the property owner should have a city forester, licensed arborist or certified tree appraiser, evaluate every tree in the proposed construction area to determine if preservation is worthwhile. For each existing tree, consider location, present size, future size, species, vigor, cost of preservation, and cost of removal.

While evaluating trees for preservation, visualize the future landscape. If plans call for preservation of trees near buildings or in landscapes, the trees should be sufficiently

healthy to justify preservation. Some large, mature trees may not be structurally sound or esthetically appealing to warrant preservation. Older trees do not adapt to environmental changes as well as younger trees, thus it may be more practical to protect a 1- to 8-inch diameter tree than a larger, more mature tree. Some existing trees (particularly the smaller trees) may be dug with a tree spade and relocated on the property. Tree species differ in their ability to adapt to environmental change (Table 1). Recognize that it may be impossible to preserve every tree.

To avoid short- and long-term problems, early in the planning process consult all parties involved in the project, including the property owner, contractor, architect, engineer, and arborist.

Once trees are selected for preservation, prepare a preservation plan that contains specific tree preservation methods. Set contractor guidelines for tree protection within contracts. Such guidelines include: prominently mark protected areas; erect barricades around designated trees; avoid vehicular traffic or parking in restricted areas; and prohibit material storage, grading, and dumping of chemicals and other materials in restricted areas. To ensure compliance,



Quick Facts

- Soil compaction and grade changes adversely affect tree root health, and can lead to branch dieback and tree death.
- Prior to starting construction activities, evaluate existing trees in the area to see if preservation is worthwhile and feasible.
- Involve all parties associated with the construction project when determining which trees to preserve.
- Establish specific guidelines to prevent tree injury during the construction project.
- Minimize injury to existing trees with properly placed and properly sized barricades.

Table 1. Adaptability to environmental change.

High	Degree of Adaptability	
	Moderate	Low
American elm	Aspen	Bolleana white poplar
Common hackberry	Black walnut	Black locust
Cottonwood (spp)	Boxelder	Colorado blue spruce
Ginkgo	Bur oak	English oak
Green ash	Linden	Lombardy poplar
Honeylocust	Norway maple	Northern red oak
London planetree	Pine (spp)	Norway spruce
Siberian elm	White oak	
Silver maple		
White ash		
Willow (spp)		

*C. Dennis, Colorado State Forest Service; and W.R. Jacobi, professor, bioagricultural sciences and pest management. 6/08

contractors should have tree preservation bonds to cover potential noncompliance fines. Noncompliance fines are based on trees species, tree value, replacement costs if required, and the amount and type of damage done. Tree preservation bonds create an additional incentive for compliance. All parties should be aware of and agree to the consequences for noncompliance.

Before construction begins, conduct an on-site meeting with all parties, with special emphasis on educating the project contractor. Provide a handout that outlines the preservation plans to everyone working on the project.

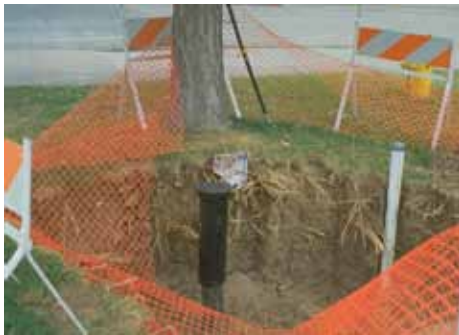
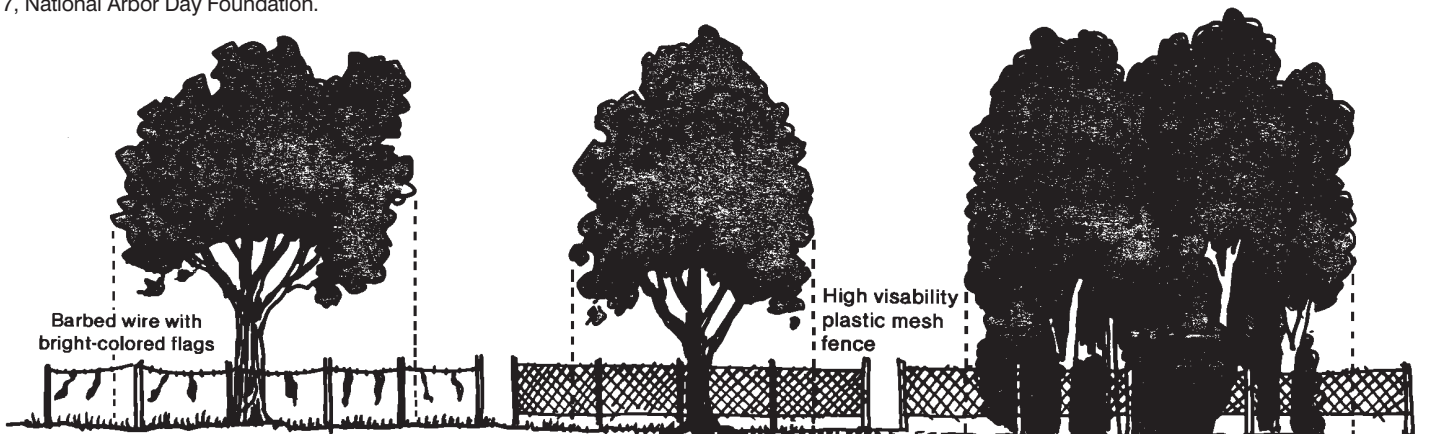


Figure 1: Roots lie in the upper 24 inches of soil and are easily damaged.



Figure 2: Highly visible tree protection barriers.

Figure 3 (below): Ideally, the protection barriers should extend beyond the dripline. Reprinted with permission from *Tree City USA* Bulletin No. 7, National Arbor Day Foundation.



The Importance of Protecting a Tree's Root System

Tree root systems contain large, woody roots, and small, short-lived absorbing roots. Large, woody roots are perennial and grow horizontally and are mostly in the top 6 to 24 inches of the soil (Figure 1). Their main functions include anchorage, water and mineral transport, and nutrient and water storage.

Smaller absorbing roots, averaging 1/16 inch in diameter, constitute the majority of the root system's surface area. These roots grow outward and upward from the large roots, near the soil surface where minerals, water and oxygen are abundant. Their major function is to absorb water and minerals.

The root zone extends horizontally from the tree for a distance at least equal to the tree's height. Preserve at least 50 percent of the root system to maintain a healthy tree. During summer construction, trees require adequate water, enough to saturate the soil, every one to two weeks.

Preventing Injury to Existing Trees

Preventing damage is less costly than correcting it. Post highly-visible barricades and signs around the trees and areas to be protected (Figures 2 and 3). The optimal size of barricaded areas varies by tree species, size, and construction project. For recently planted trees (one to four years), the area under the branches (dripline) should be adequate. For minimal protection of trees older than four years, barricades should extend beyond the dripline; for each inch of diameter of the tree's trunk, add extend the protection area an additional foot. For additional

protection, a layer of wood chips (4 to 6 inches deep) can be placed around each tree prior to placement of the barricades. Examine trees and barricades at least once a week during construction.

Avoid Direct Injury to Existing Trees

There are four general forms of direct tree injury caused by mechanized equipment: bark removal, branch breakage, surface grading and trenching injury (Figures 4 and 5).



Figure 4: Surface grading severs many roots.



Figure 5: Trenching near trees can severely damage root systems.



Figure 6: Construction vehicles can damage the existing soil structure by compressing soil particles.



Figure 7: Within two years of adding 12 inches of soil, this tree died.



Figure 8: Lowering the grade severs roots and kills trees.

Bark removal or “skinning” of the trunk can be caused by any type of equipment. This can easily kill the tree, because it cannot survive without bark. Breakage of lower branches may make the tree unsightly or remove too many leaves, causing stress. Surface grading removes surface vegetation and topsoil that contains many absorbing roots. Also, injury often occurs to the tree base. Trenching for utilities can also cause substantial root damage and should be done far away from existing trees. In new developments, this can be done easily. Where the trench must pass under or near a tree, avoid substantial injury by using a power auger to bore a tunnel under the roots. If trenching is unavoidable, place the trench as far from the trunk as possible (minimum 8 feet), cutting as few roots as

possible. Cleanly prune cut roots and refill trenches as soon as possible to prevent excessive moisture loss. Wounds make the tree highly susceptible to root pathogens and decay fungi. Decline and death can result if more than 40 percent of the stem or roots are damaged or killed. Stressed trees are also more susceptible to insects such as bark beetles and borers.

Avoid Soil Compaction Problems

After a tree is established, any activity that changes the soil condition is extremely detrimental to its health. Construction traffic compacts soil most severely near the surface, the area where the majority of tree roots lie (Figure 6). Soil compaction decreases soil permeability and interferes with essential gas exchange processes as well as surface and subsurface drainage. When root growth is restricted by compacted soils, less nutrients and water are available for plant growth. These factors limit root growth, reduce tree vigor and can cause tree death. Decline and dieback may gradually appear over a period of years.

It is much easier to avoid soil compaction than to correct it. Keep construction traffic and material storage away from tree root areas. Apply a 4 to 6 inch layer of wood chips around all protected trees to help reduce compaction from vehicles that inadvertently cross the barricades.

Avoid Soil Fills

When excessive amounts of soil are added around a tree base, the additional soil interferes with normal air and moisture circulation to the roots (Figure 7). Soil fills subject roots to improper gas exchange and can lead to carbon dioxide or toxic gas buildup. Minor fills (less than 3 inches)

will not harm most trees. The topsoil should be high in organic matter and have good drainage properties – it should not be clay. Major changes in grading require an air supply to the roots. This can be accomplished with a drywell.

Early symptoms of decline from excessive fill are small leaf size and premature fall coloration. Dieback of twigs and progressive dying of larger stems in the upper crown also occurs. This dieback may not be noticed for several years, depending on tree species and initial tree health.

Avoid Soil Cuts

Lowering the grade usually is less complicated than fills, but can be equally harmful. Where the grade has been changed near a tree, the most common damage is the complete severing of major roots in that area (Figure 8). This can cause decline, death or decreased stability to high winds. To protect the tree, terrace the grade (Figure 9) or build a retaining wall between the tree and the lower grade. Walls should encompass an area extending at least to the drip line.

Pruning Injured Trees

Trees with injured roots may show branch dieback quickly or within a few months after the initial injury. Prune dying branches to reduce insect and disease damage to the rest of the tree. Also prune to reduce any hazardous conditions on preserved trees. It is better to wait until the tree exhibits branch die back to see how much to prune, rather than to arbitrarily remove parts of the crown because you assume the root system was damaged. Wildfire regulations may require pruning to a height of 10 feet all trees around your home and outbuildings.

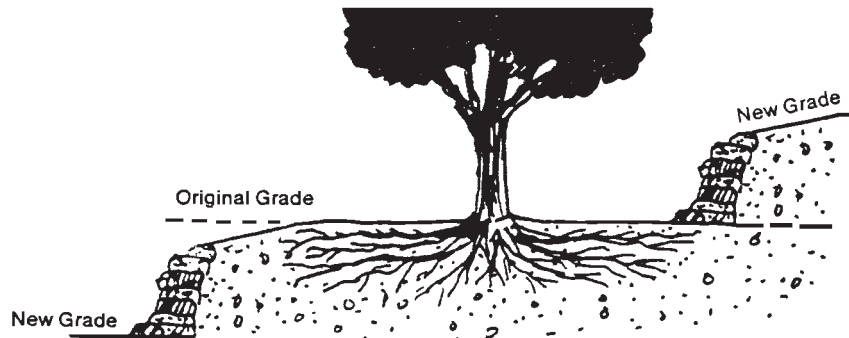


Figure 9: Terracing can substantially limit root injury. Reprinted with permission from *Tree City USA Bulletin No. 7*, National Arbor Day Foundation.

Additional Information

Fact Sheets

- 2.926, *Healthy Roots and Healthy Trees*
- 6.302, *Creating Wildfire-Defensible Zones*
- 7.419, *Large Deciduous Trees*

Planttalk Colorado™

- 1709, Hiring a tree care company
- 1721, Why prune shade trees?
- 1724, Pruning shade trees
- 1730, When to prune trees

Websites

- Colorado State University Extension county office, www.ext.colostate.edu/cedirectory/allcounties2.cfm
- Colorado State Forest Service, csfs. colostate.edu/index.htm
- American Society of Consulting Arborists, www.asca-consultants.org/index.html
- Rocky Mountain Chapter of the International Society of Arboriculture, www.isarmc.org/pro/index.htm