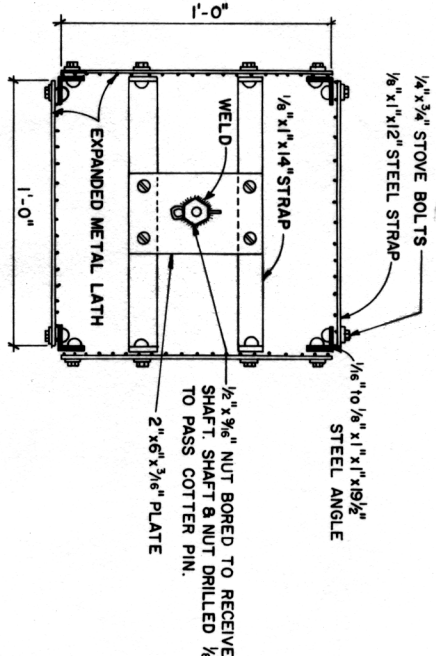
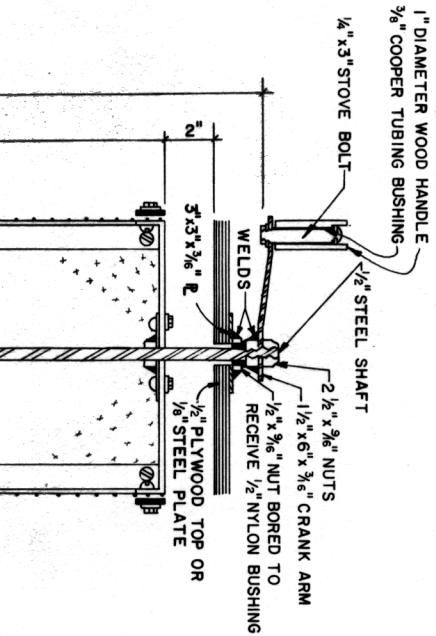
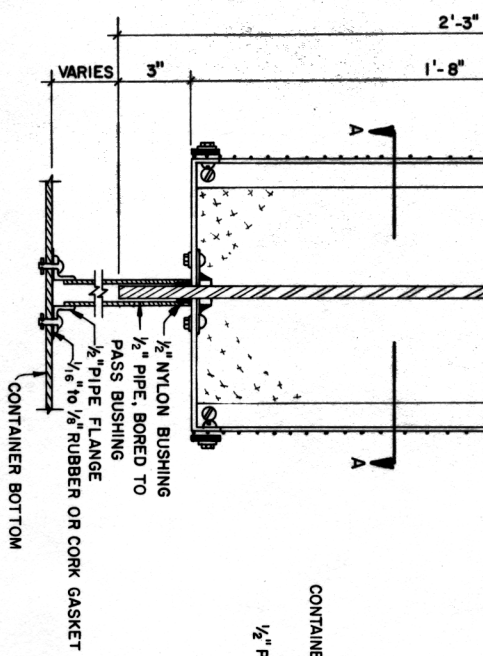


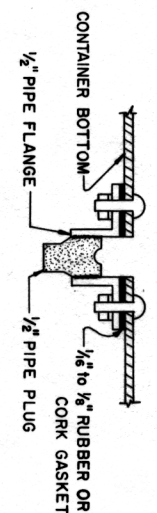
NOTE: THE HONEY EXTRACTOR SHOULD BE SPUN AFTER THEY HAVE BEEN UNCAPPED. THIS UNIT WILL HANDLE FOUR COMBS AT ONCE. CAUTION SHOULD BE USED WHEN EXTRACTING FROM NEW OR VERY OLD COMBS AS THEY ARE SUBJECT TO BREAKAGE. THESE COMBS SHOULD BE PARTIALLY EMPTIED ON ONE SIDE THEN TURNED AND PARTIALLY EMPTIED ON THE OTHER SIDE, REPEATING THIS PROCEDURE UNTIL ALL HONEY IS REMOVED.



SECTION AA

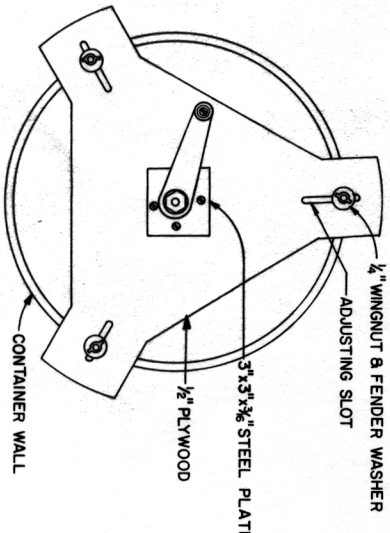


DETAIL 2 - EXTRACTOR PARTIAL SECTION

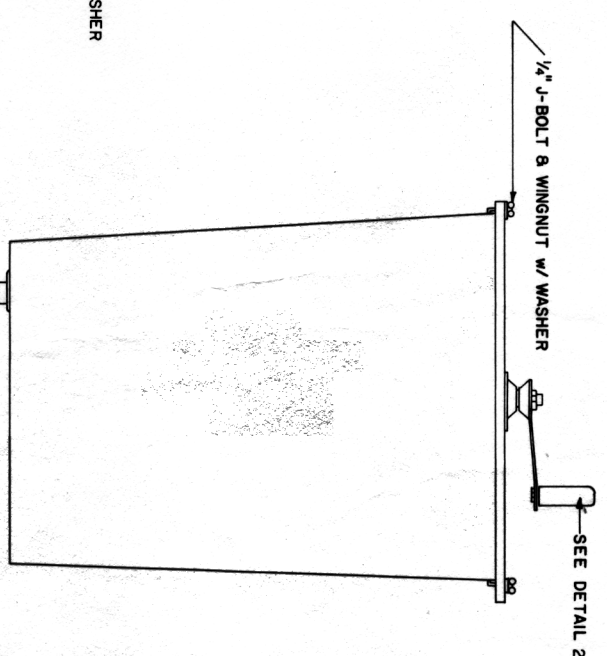


DETAIL 3 - DRAIN FITTING

NOT TO SCALE



TOP VIEW



SIDE VIEW



COOPERATIVE EXTENSION WORK IN
 AGRICULTURE AND HOME ECONOMICS
 UNITED STATES DEPARTMENT OF AGRICULTURE COOPERATING
 AND
 HONEY EXTRACTOR
 USDA '79 EX. 6330 SHEET 1 OF 1