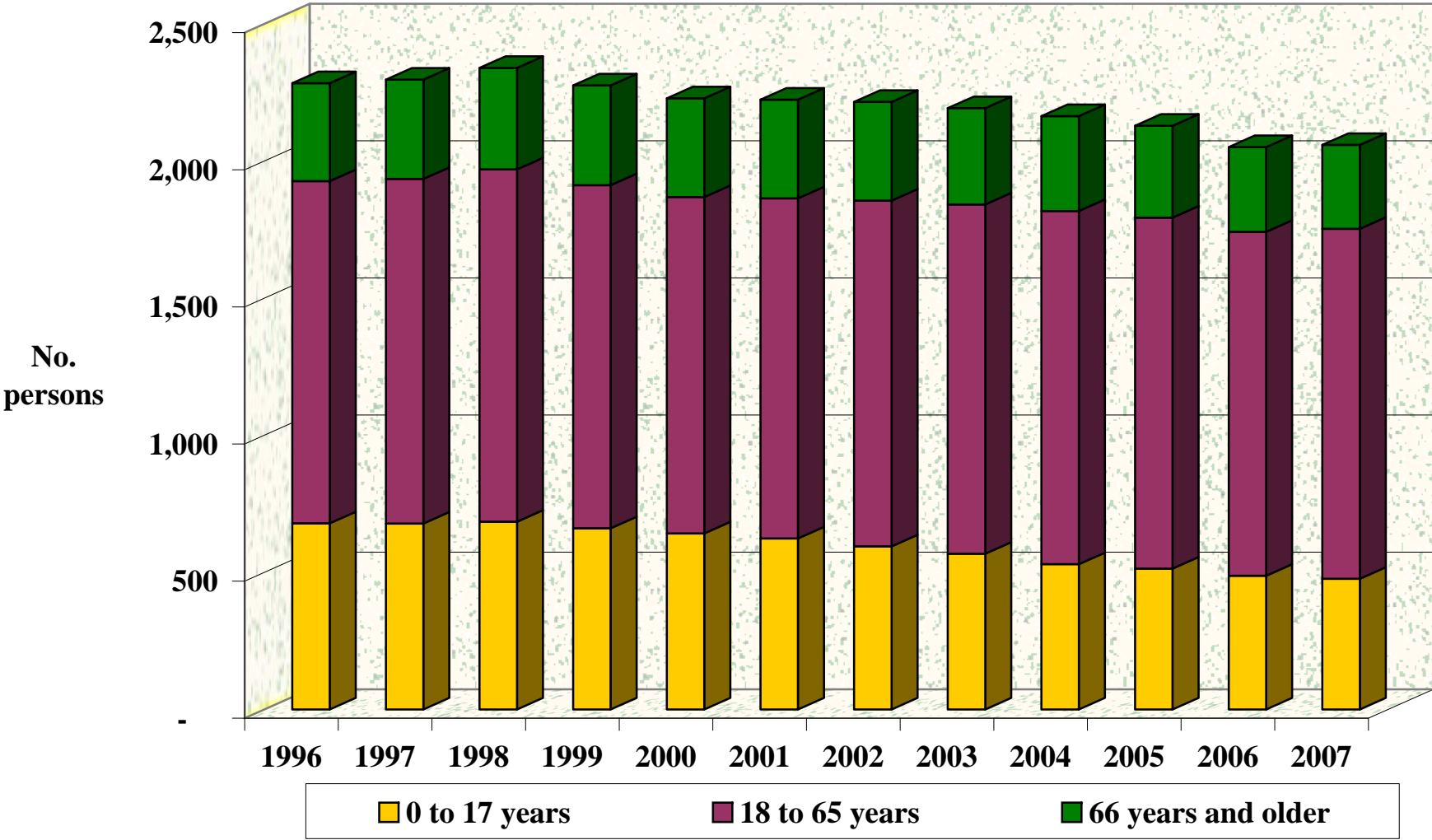
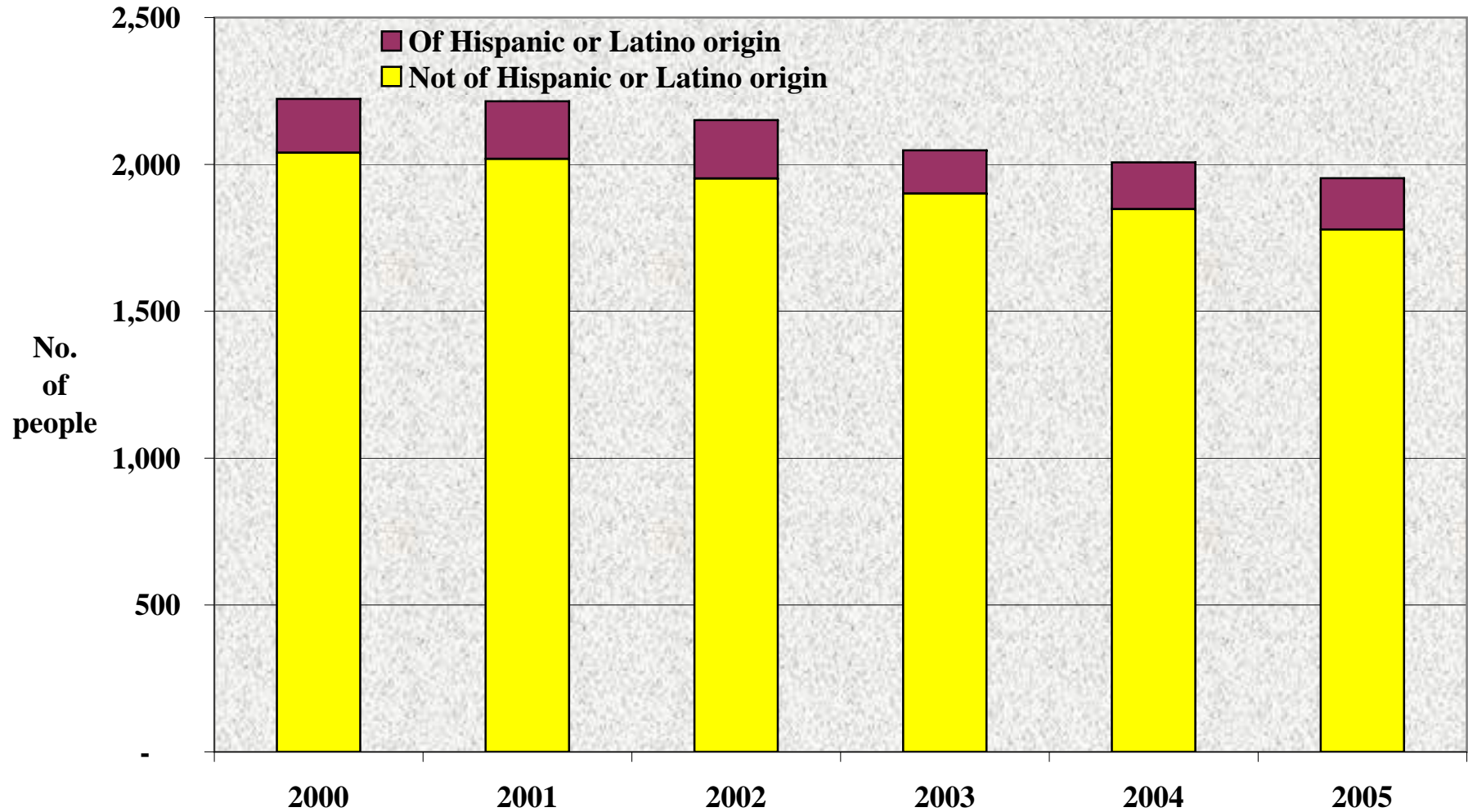


Cheyenne County: Total Population by Age Group, 1996-2007



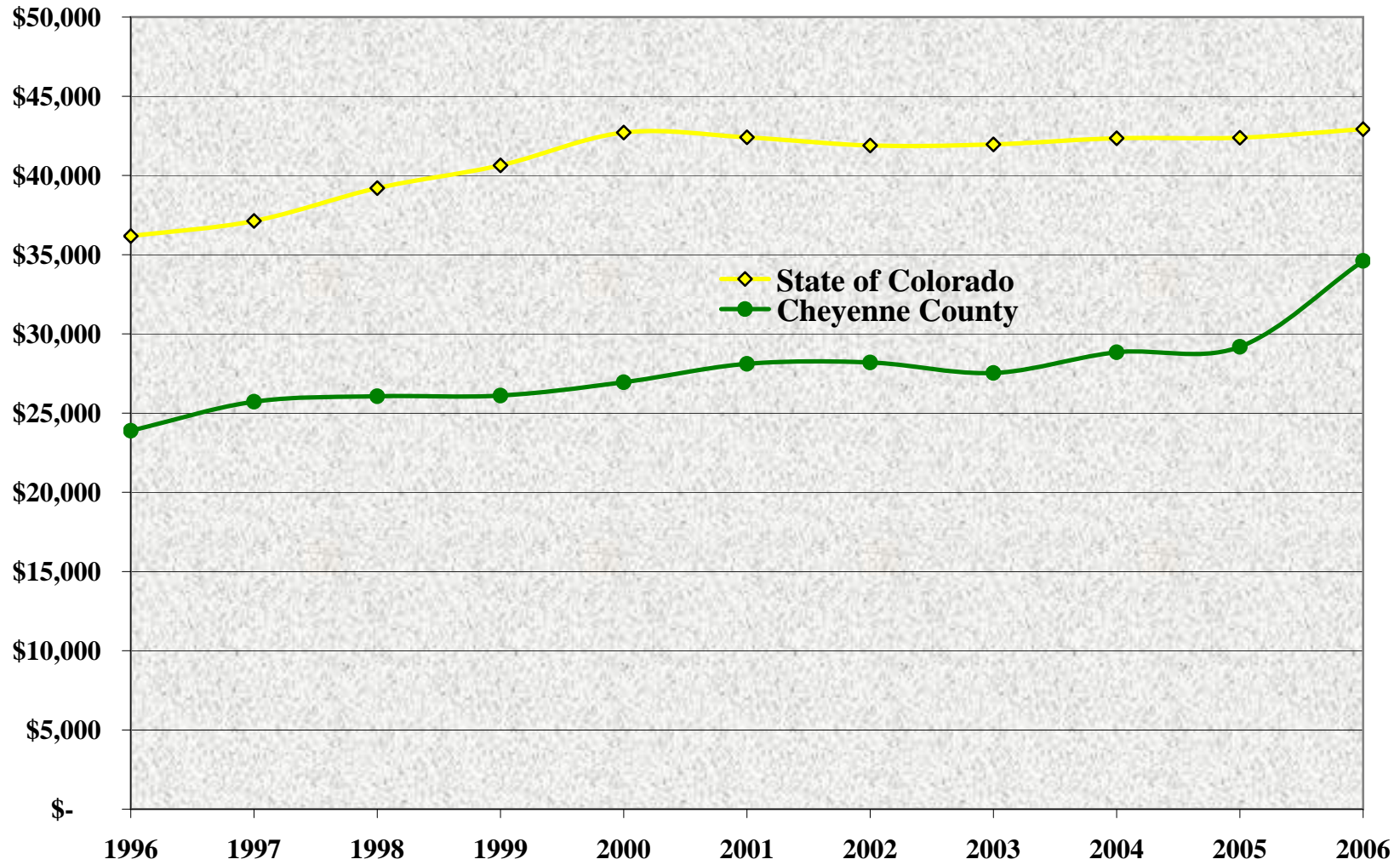
Source: Colorado Department of Local Affairs, State Demography Office, 2008.

Cheyenne County: Ethnicity of Total Population, 2000 to 2005



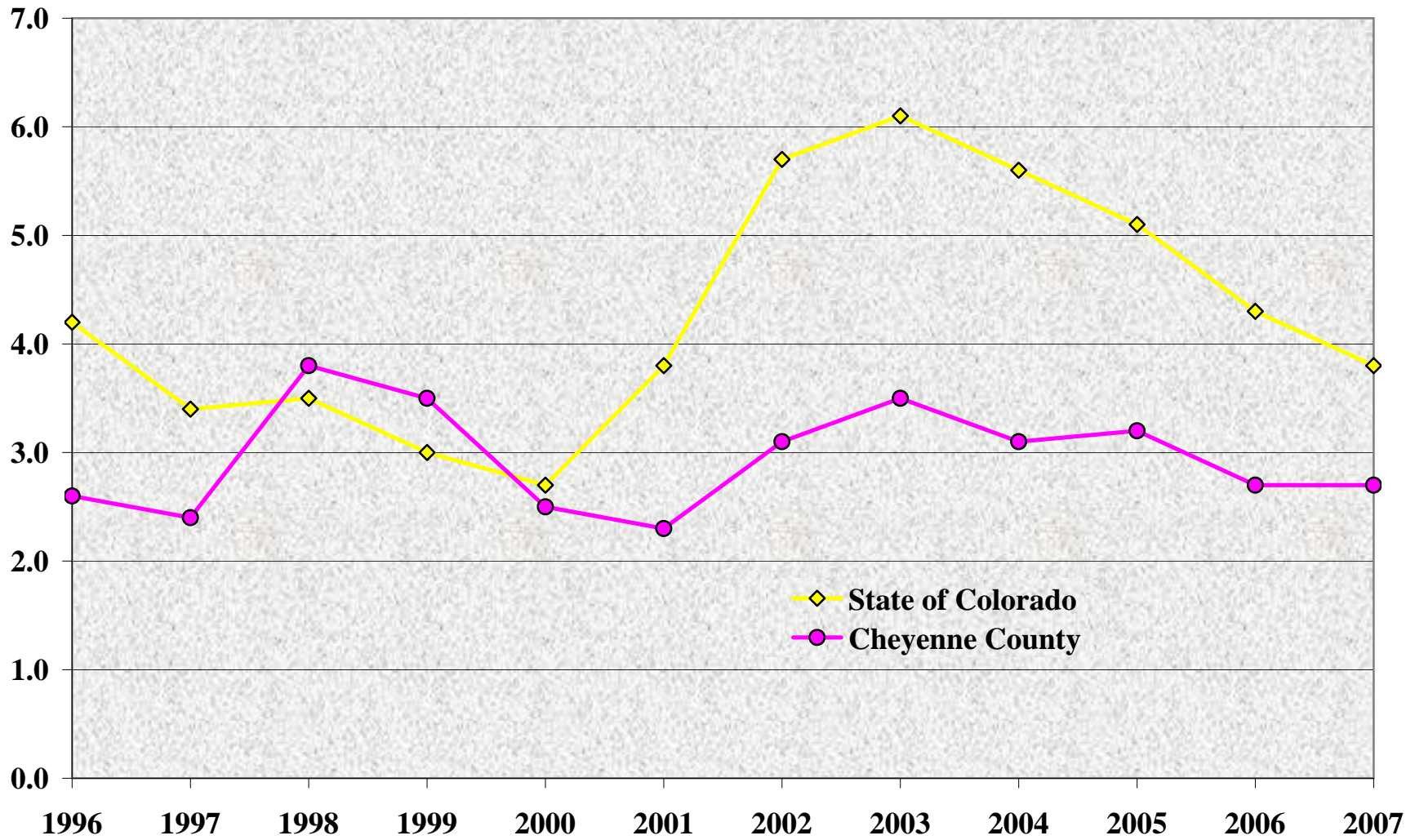
Source: U.S. Census Bureau, County Population Estimates, July 1, 2000 to July 1 2005.

Cheyenne County: Average Wage per Job, 1996 to 2006



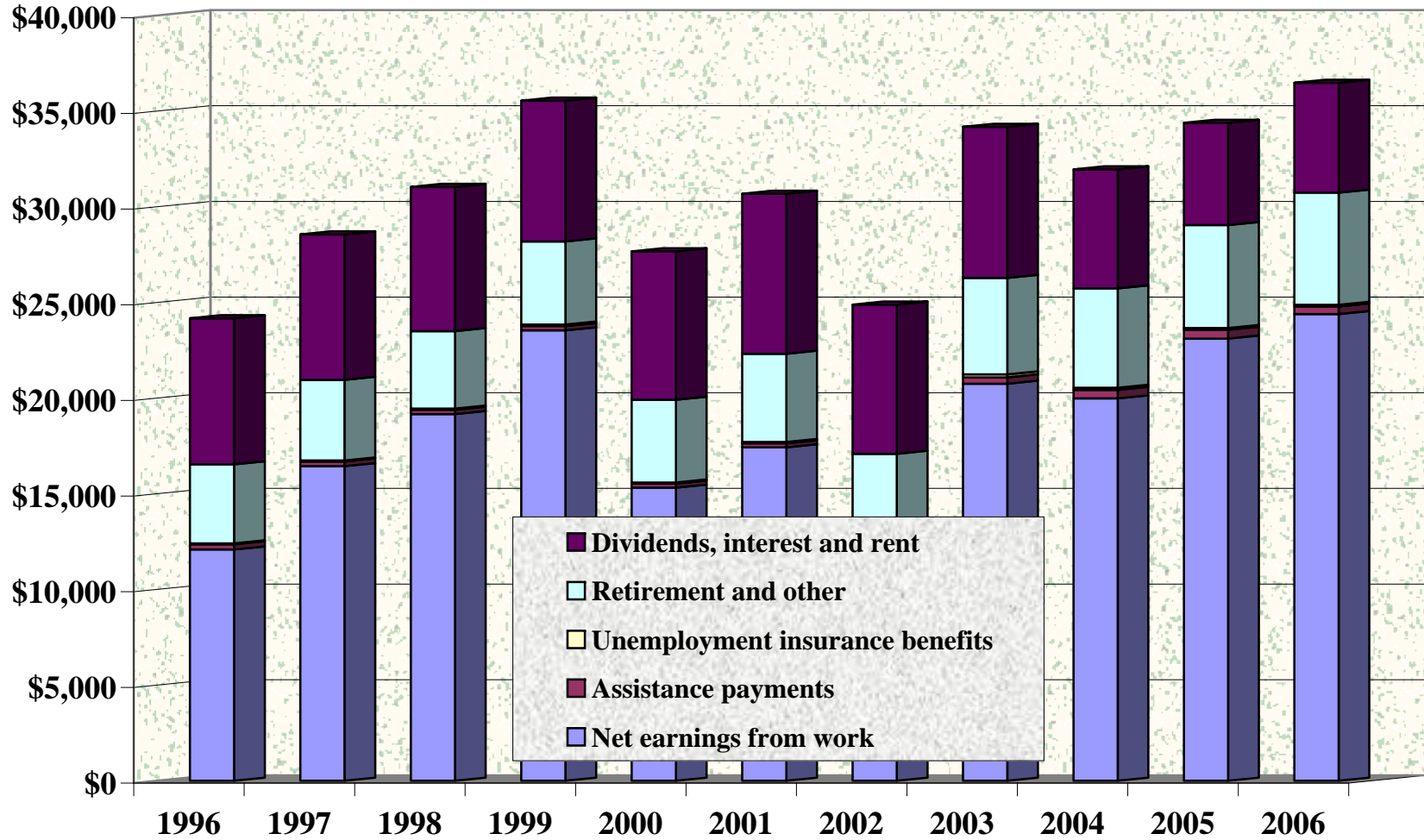
Source: U.S. Bureau of Economic Analysis, 2008. Note: Wages are in real dollars, where 2006=100.

Cheyenne County: Average Annual Unemployment Rate, 1996-2007



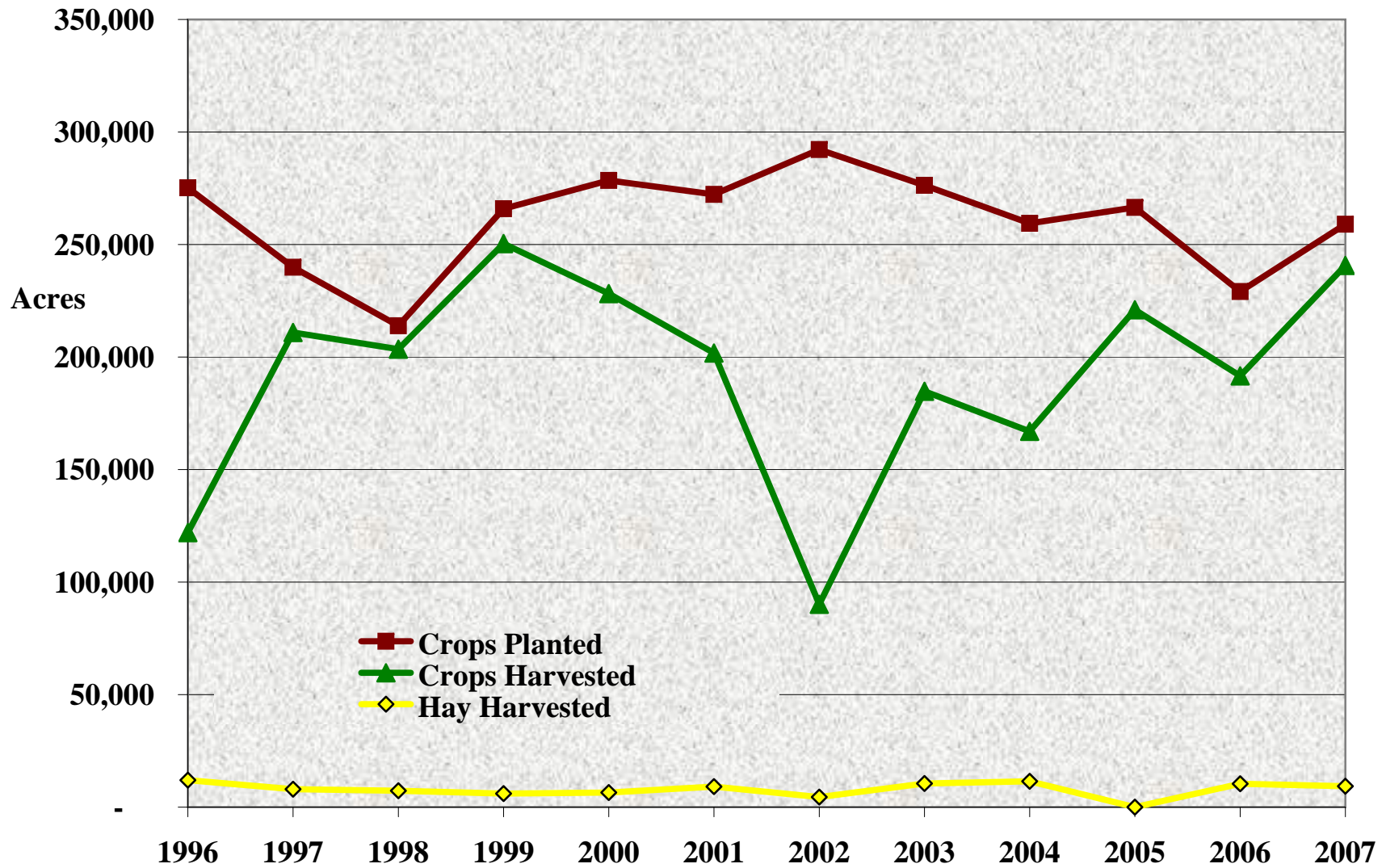
Source: Colorado Department of Labor and Employment, 2008.

Cheyenne County: Sources of Per Capita Income, 1996-2006



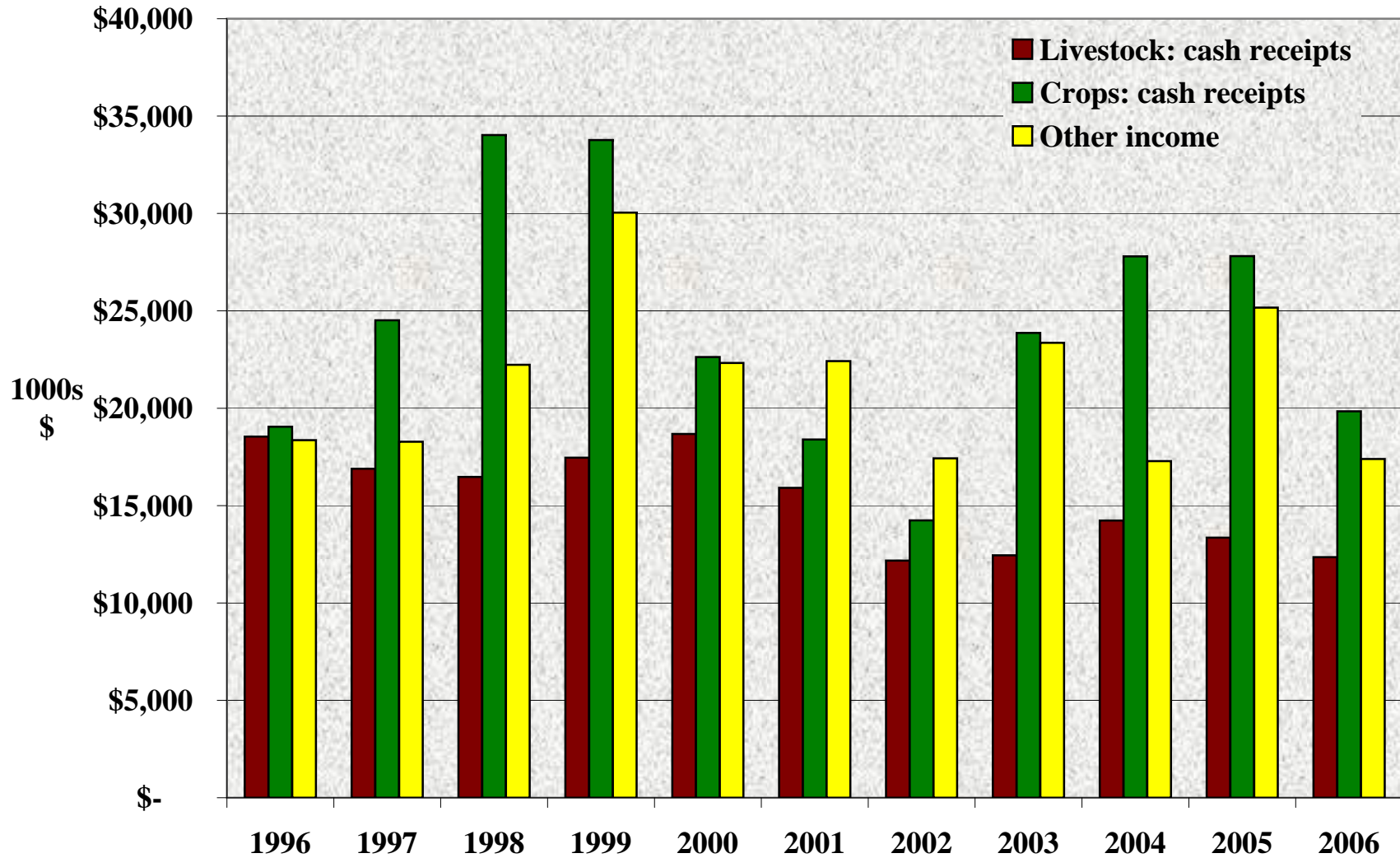
Source: U.S. Bureau of Economic Analysis, 2008. Note: All values in 2006 dollars.

Cheyenne County: Acres Planted & Harvested, 1996 to 2007



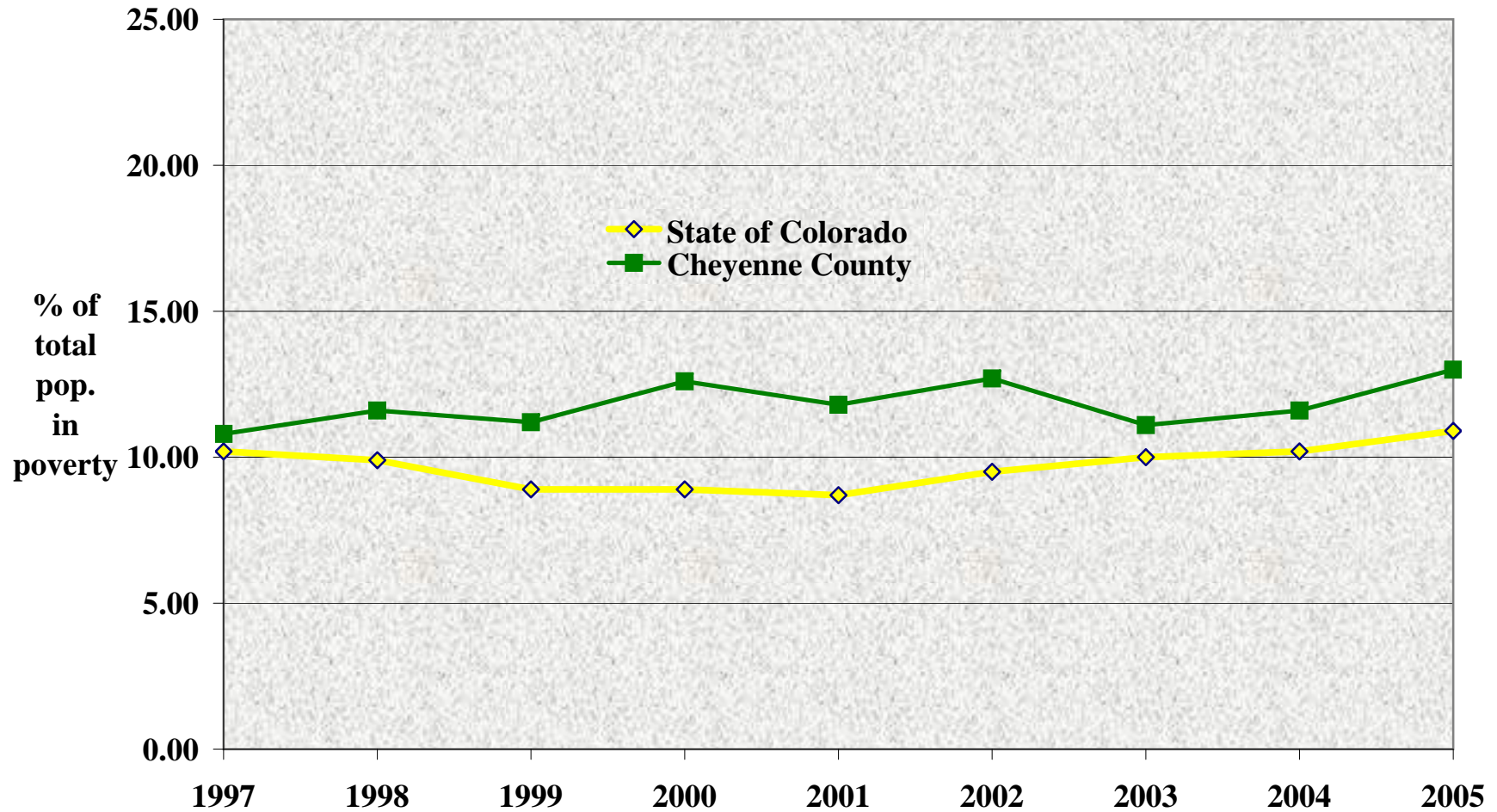
Source: Colorado Agricultural Statistics Service, 2008.

Cheyenne County: Sources of Farm Income, 1996 to 2006



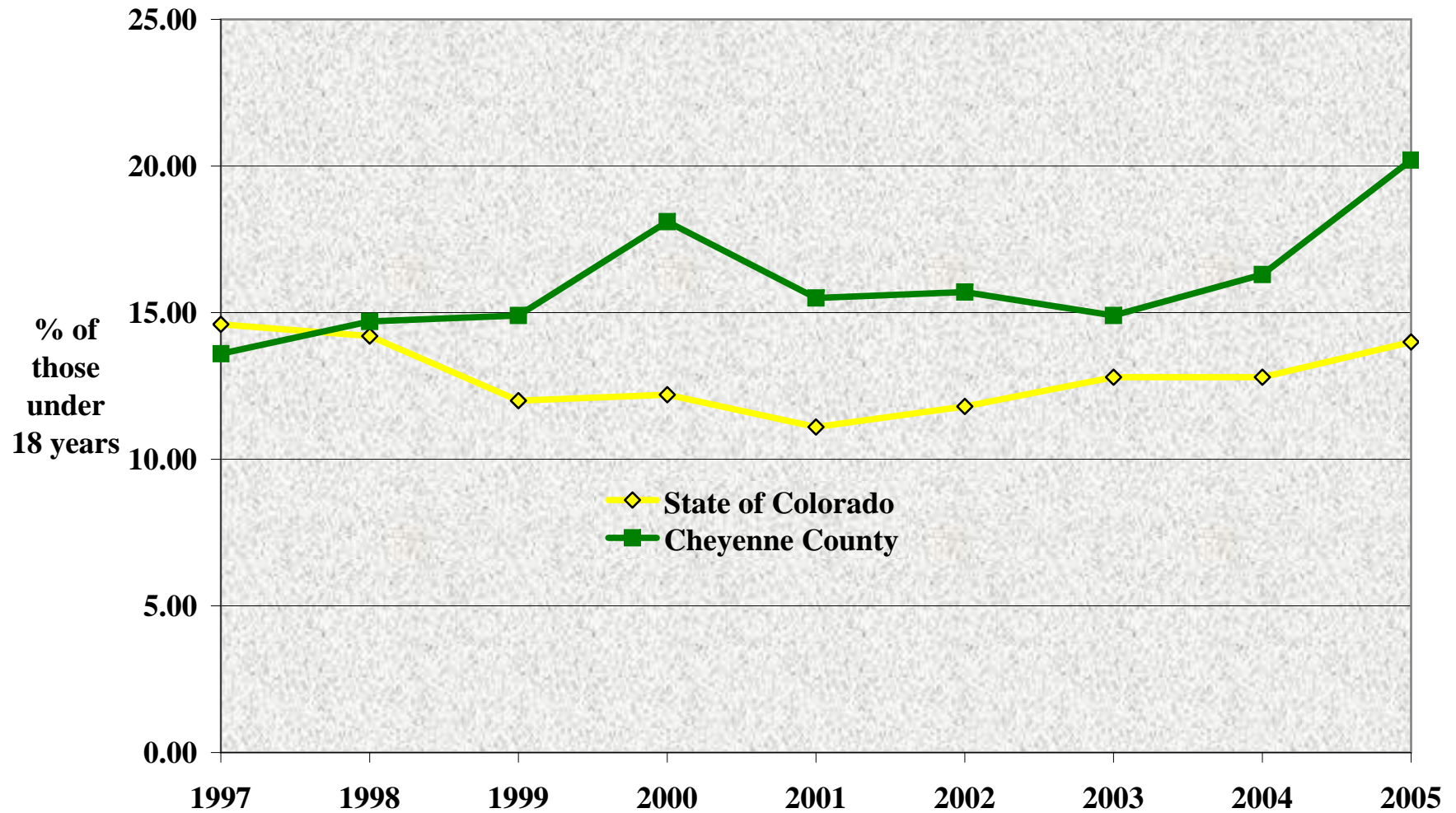
Source: National Ag Statistics Service, 2008. Note: All income data in real dollars, where 2006=100.

Cheyenne County: Estimated Poverty Rate, 1997 to 2005



Source: U.S. Census Bureau, Small Area Income and Poverty Estimates. Note that each data point is associated with a confidence level.

Cheyenne County: Percent of Those Under 18 in Poverty, 1997 to 2005



Source: U.S. Census Bureau, Small Area Income and Poverty Estimates. Note that each data point is an estimate with an associated confidence level.